

Request that the Health and Adult Social Care Overview and Scrutiny Committee support the move to Full Business Case of Phase 1 of the Future Hospital at University Hospitals Plymouth NHS Trust

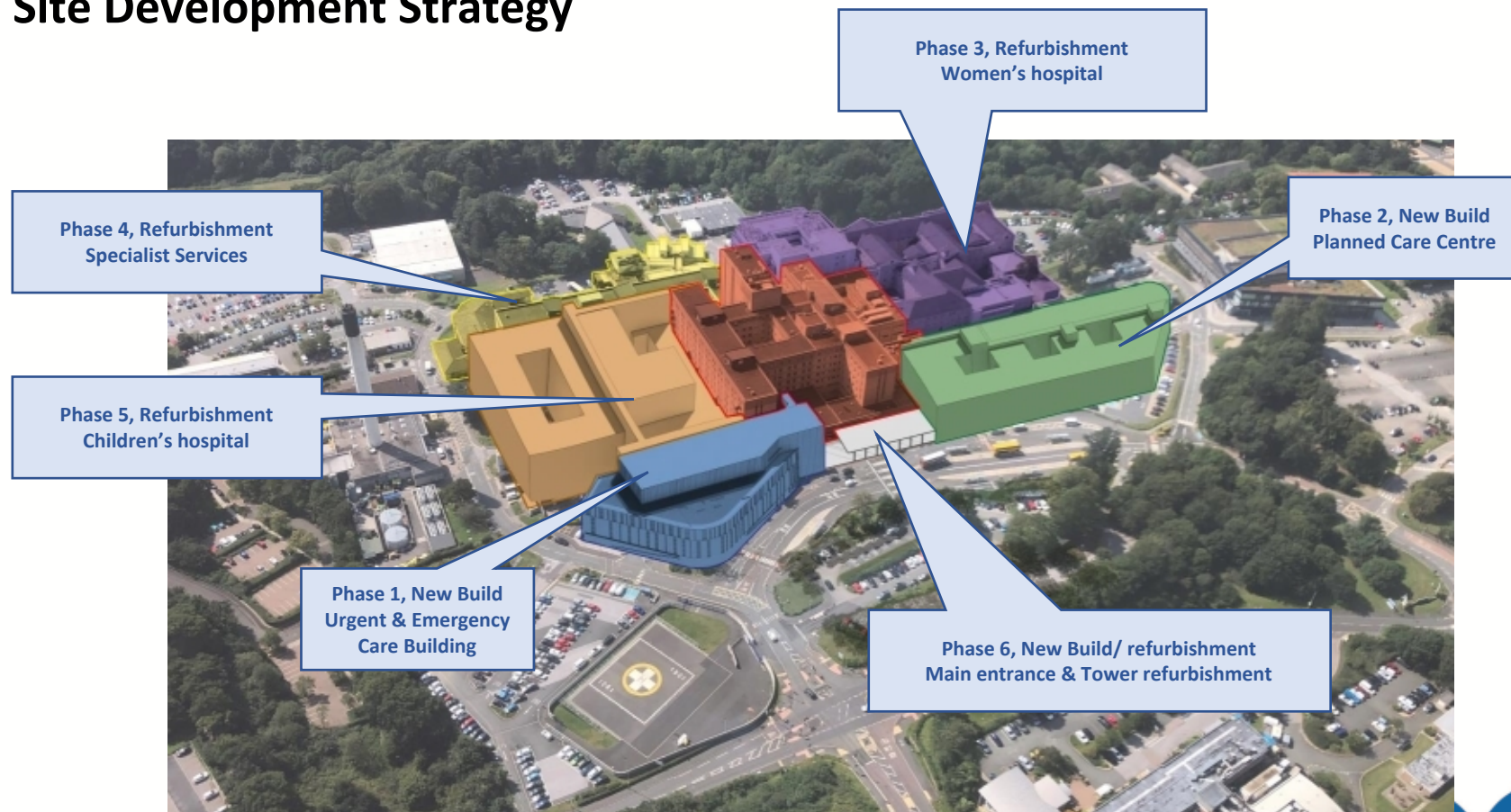
June 2023



Phase 1 Future Hospitals



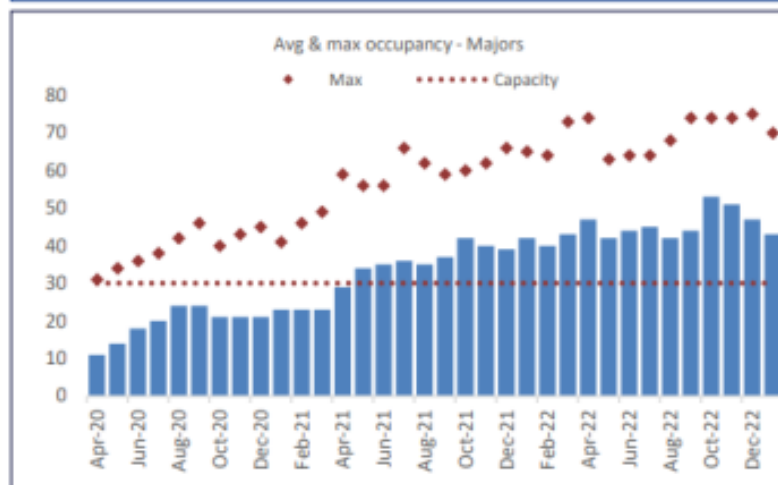
Site Development Strategy



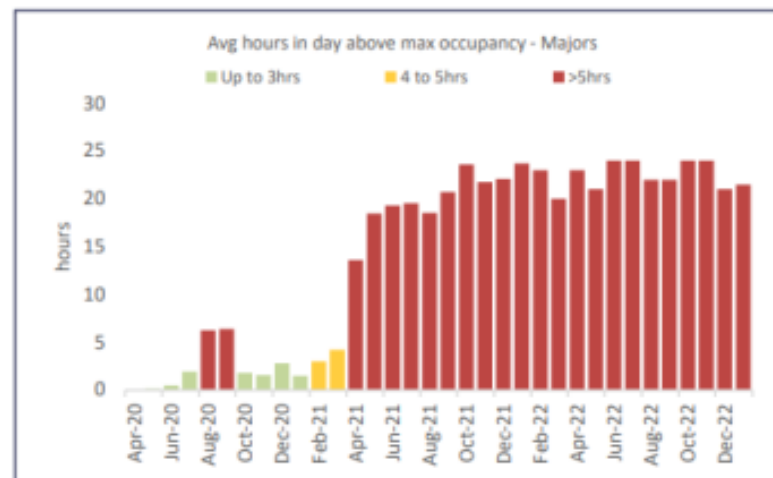
Put people first
Take ownership
Respect others
Be positive
Listen, learn, improve

Crowding in Emergency Department

Average and Max Occupancy-Majors



Average hrs in day above max occupancy



Phase 1 – new Urgent and Emergency Care Facility



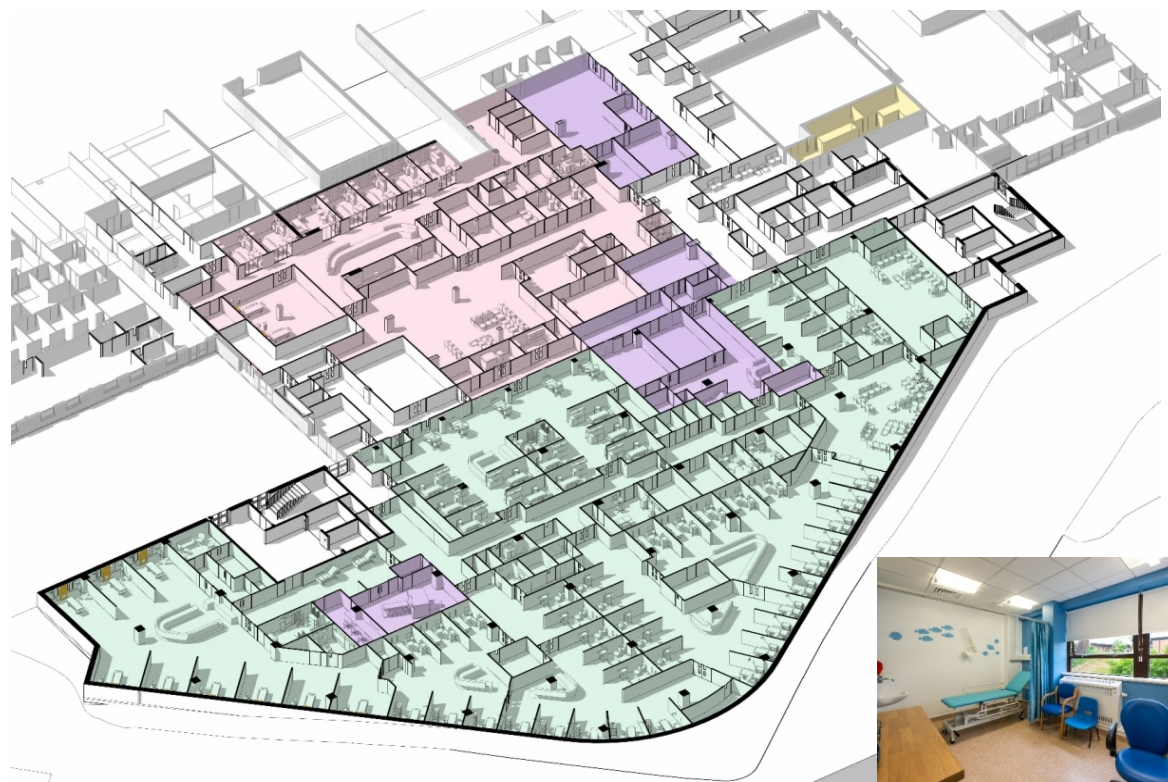
Put people first
Take ownership
Respect others
Be positive
Listen, learn, improve

Building Layout – Level 6

- Adult Emergency Department
- Paediatric Emergency Department
- Imaging
- Mental Health

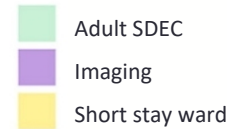
Level 6 is at the same level as the hospital main entrance and is the main **Emergency Department floor for adults and children.**

Separate ambulance and 'walk-in' entrances are provided.



Respect others
Be positive
Listen, learn, improve

Building Layout – Level 7

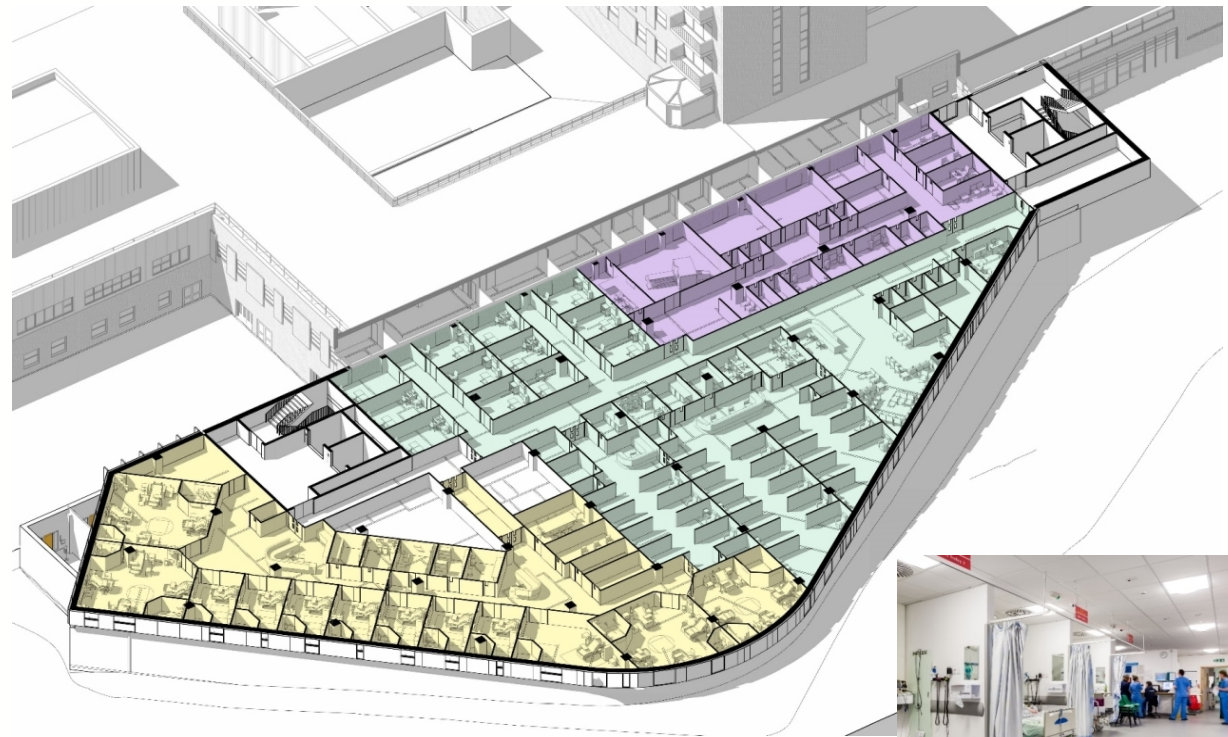


Level 7 contains the ‘**Same Day Emergency Care**’ (SDEC) facilities, these include chair based assessment spaces and private consultation and examination spaces.

The level also provides a **24 bed short stay ward**.

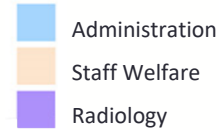
Separate Imaging facilities are provided including x-ray and a CT scanner.

SDEC provides for the growth in admitted non-elective activity for patients who spend one to two days in hospital.



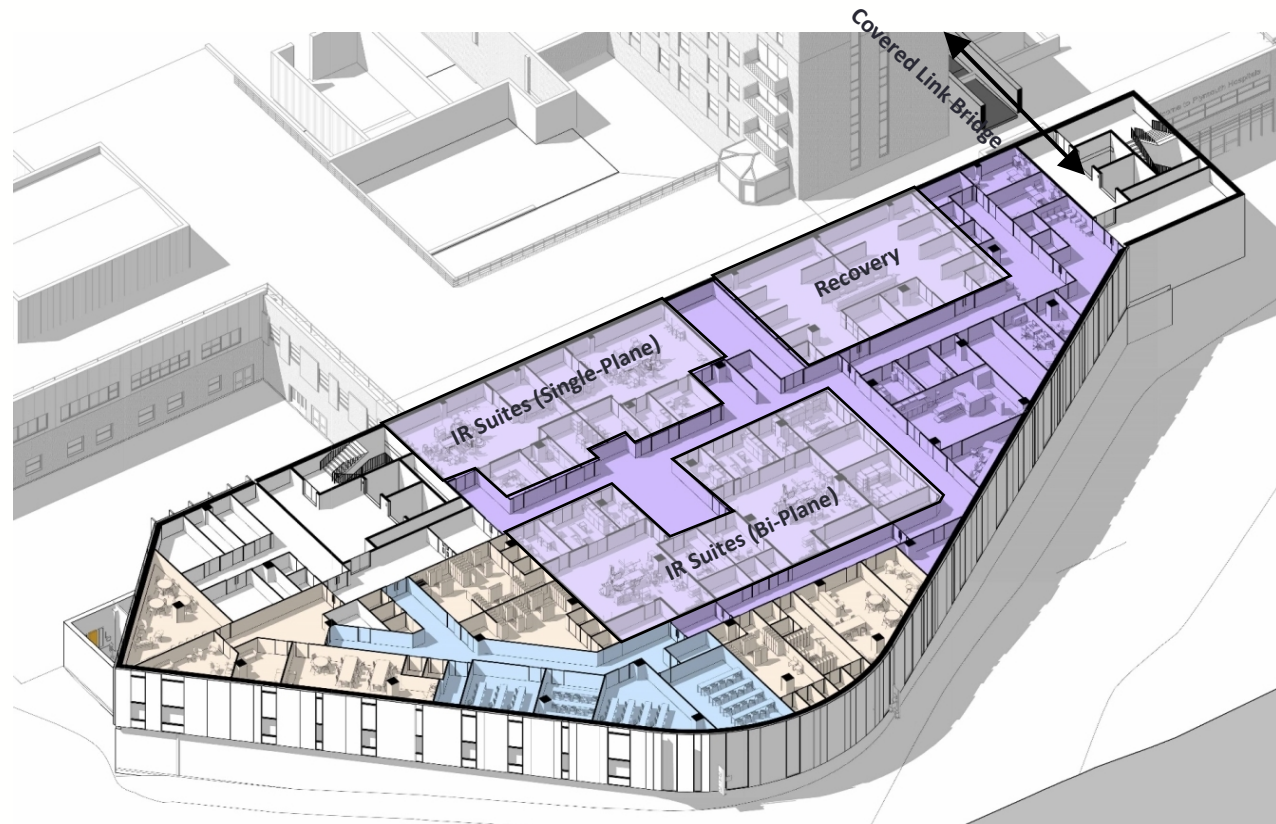
Take
Respect others
Be positive
Listen, learn, improve

Building Layout – Level 8



Four new **Interventional Radiology Suites** (Bi-Plane and Single-Plane) with adjacent patient recover facilities.

A new connection linking the existing hospital with the new facilities is also to be provided on Level 8.



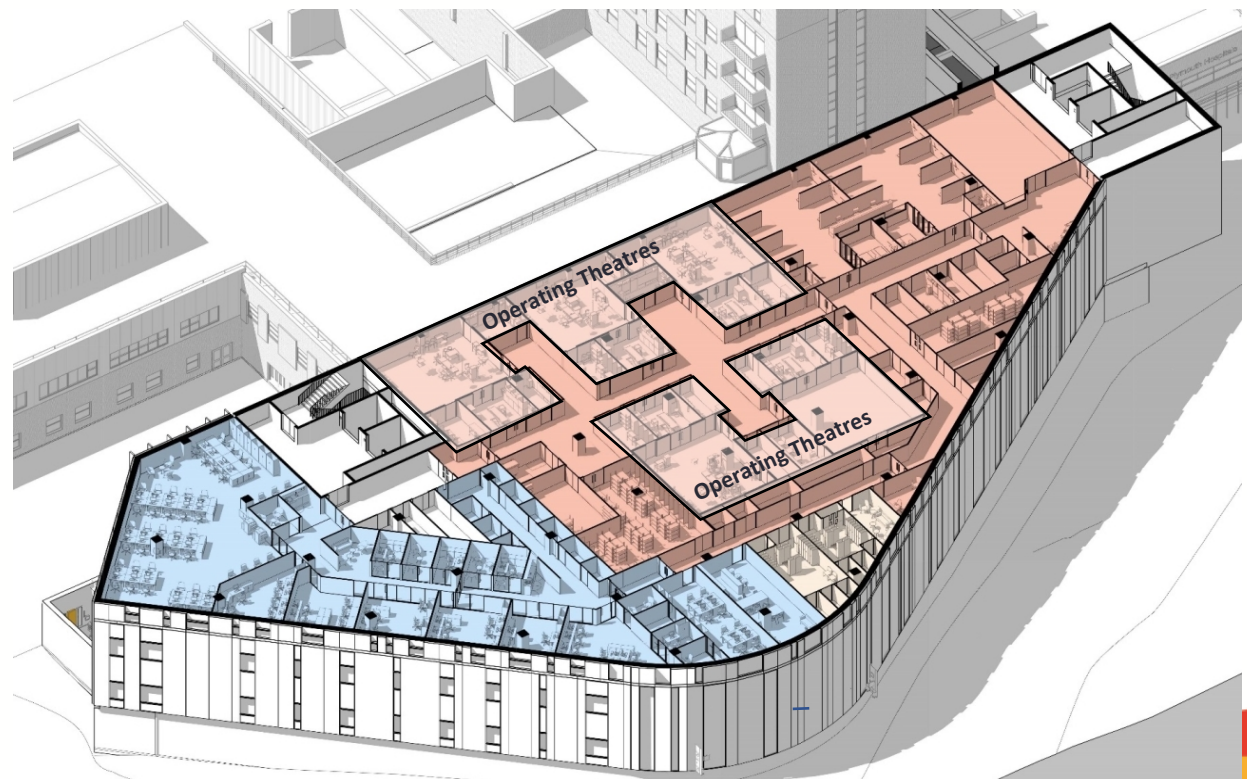
Respect others
Be positive
Listen, learn, improve

Building Layout – Level 9

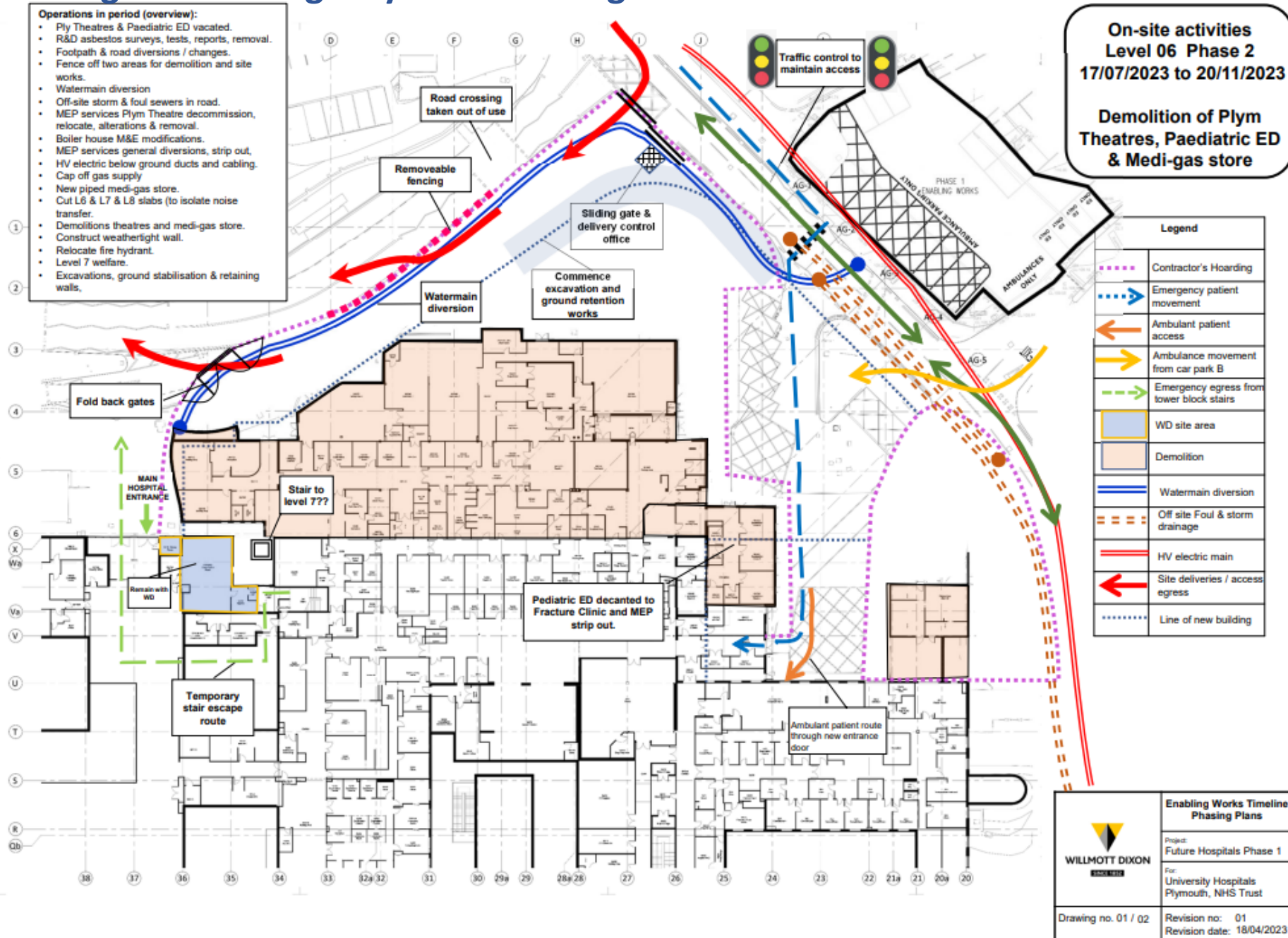
- Administration
- Staff Welfare
- Emergency Surgery

Level 9's primary use is for **Surgery facilities** with 5 new operating theatres provided.

Administrative offices and welfare facilities are also incorporated on this floor to the east of the floor plan.



NHP Urgent & Emergency Care Building : Build Phase 2



Mitigations

- Fracture Clinic / Paediatric ED
- Urgent Treatment Centres
- Primary Care Streaming
- Discharge Assessment Capacity
- Additional Bed Capacity



Early Stakeholder Engagement

- We have been engaging around Future Hospitals since 2018
- We have a comprehensive Communications and Engagement plan which covers Phase 1 of the new Urgent and Emergency Care Centre as well as other major capital developments
- Learning from and sharing best practice, we have developed messaging, innovative materials and have maintained strong support from MPs and partners
- Feedback we have already received includes:

Cornwall Council HASCOSC

“Having had the benefit of a full presentation on 16 November 2022., the committee agreed that this was a vital and long overdue development, which will benefit residents of Cornwall who use this facility, both as their local hospital and those who may need to use Derriford as the region’s Major Trauma Centre.

Devon ICB: “It will help deliver key objectives of the Long Term Plan with the consistent delivery of efficient and effective care, addressing quality and productivity; and improving equity of access across the county.”



Put people first
Take ownership
Respect others
Be positive
Listen, learn, improve

Activity in numbers (April – December 2022)

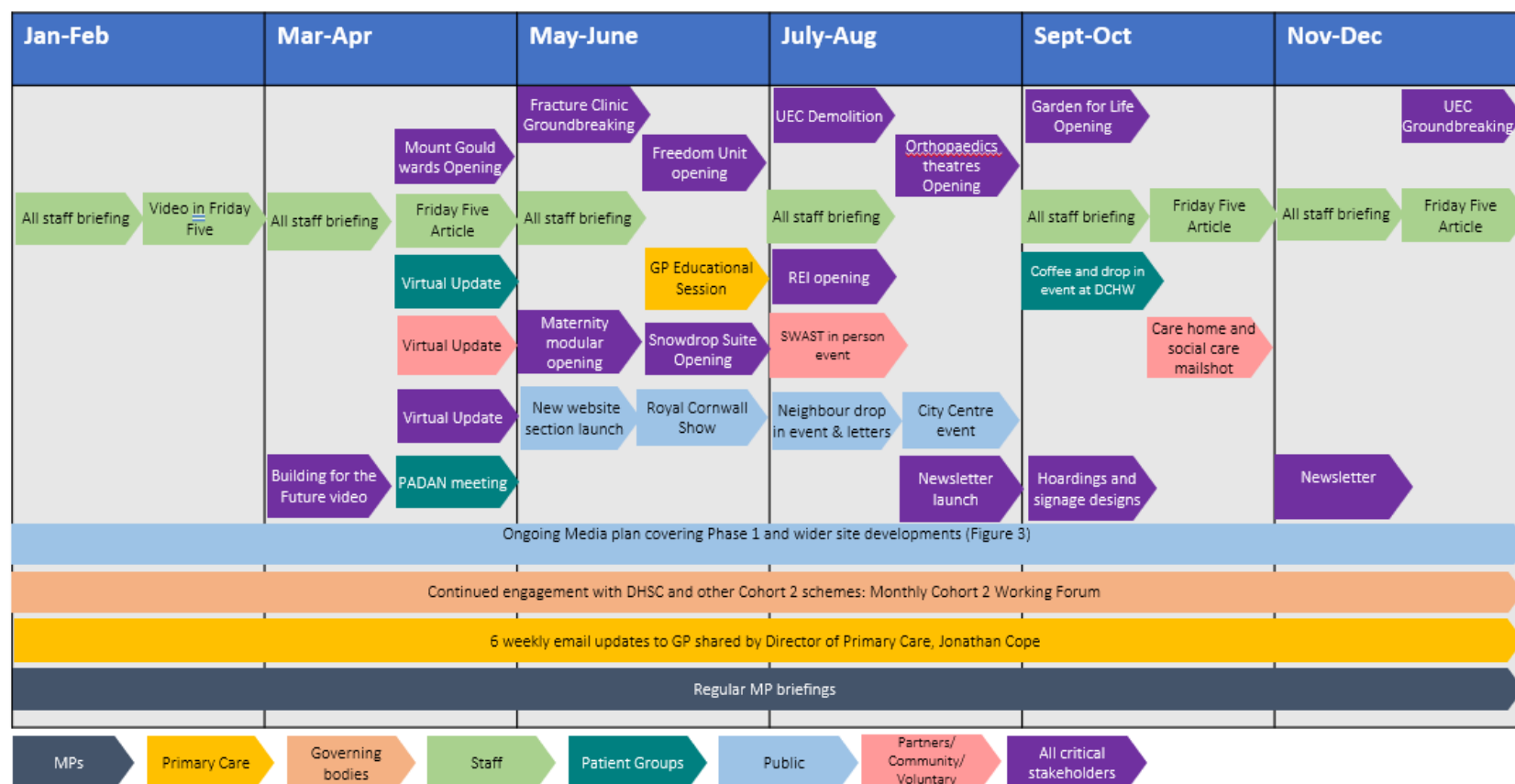
- Stakeholder engagement – 100+ meetings including all staff briefings, cohort 2 programme meetings, sustainability meetings, and working with south west colleagues to learn from and share best practice
- Two large scale in person events with 213 attendees at Virtual Reality event
- 31 pieces of media coverage including regional, national and specialist media coverage across online, print and broadcast
- [Content: 11 videos](#) in 'Building for the Future' YouTube playlist, 5 articles in Friday Five, covered in Cascade magazine, 7 press releases, creation of sustainability blog and Site Services news bulletin, branding, website content



Staff and stakeholder VR event in September 2022



Figure 1: Communications and Engagement Plan Overview 2023



Take ownership
Respect others
Be positive
Listen, learn, improve

Ongoing: Stakeholder support for Phase 1

Key themes from engagement which we have fed back into the programme

- Support for the plan
- Provision for mental health care
- Staffing
- Further expansions e.g. beds
- Environmental
- Community care
- Access and car parking
- Staff rest areas



Stakeholder Engagement and Support

Recent engagement – summer 2023



Royal Cornwall Show

Public engagement session held across three days at the Royal Cornwall Show in Wadebridge. This event was in collaboration with the ICB and Royal Cornwall Hospitals with the aim of engaging with people from across Devon and Cornwall

Citizens Advice Plymouth

“It’s really good to be invited to this as a charity working hard in the city so thank you for inviting us”

Virtual Briefings

Critical stakeholder briefing and Q&A session hosted by Programme Director, Stuart Windsor and third sector and community groups briefings and Q&A session hosted by Programme Manager, Nicki Collas



National Team Visit

UHP recently hosted a visit from Morag Stuart, Chief Programme Officer and Jonathan Scott-Baker, Senior Executive for the New Hospital Programme



Previous support from this Committee: October 2022



Put people first
Take ownership
Respect others
Be positive
Listen, learn, improve

Moving to Full Business Case - Timeline

Future Hospital Programme Critical Path

Milestone #1
May 2023

Enabling Works

Milestone #2
August 2023

Demolition of Plym
Theatres Building

Milestone #3
September 2023

Submission of Full
Business Case

Milestone #4
February 2024

Start Onsite for Main
Building Works

Ultimate Goal
December 2026

Completion of Main
Building Works



Put people first
Take ownership
Respect others
Be positive
Listen, learn, improve

Our ask of the Committee

As we move to Full Business Case we request a letter formally expressing

- ☐ members' support for the scheme and
- ☐ confirming that the case does not require public consultation



Questions

